

# CyberMaster™

Ship board Stability and Longitudinal strength Indicating Software

Developed By -


**Cybermarine**  
[www.cybermarine.net](http://www.cybermarine.net) | [cybermaster@cybermarine.net](mailto:cybermaster@cybermarine.net)



## Introduction

Cybermaster™ is an onboard ship load and stability indicating software which works on Windows Operating System. Approvals from all leading classification societies make Cybermaster™ a standard application with familiar user end graphics and ensure high level of accuracy in all outputs.

This software is interface ready with various sensing devices and can be delivered as a package along with tank level gauging and Valve Remote control systems using various communication protocols.

Cybermaster™ with different modules can be customised for FPSO, General Cargo Vessel, Bulk Carriers, Oil/Chemical Tankers, Gas Carriers, Container Vessels, Passenger Vessels, Semi-Submersibles, Jackup Rigs, Anchor handling Tugs & Supply Vessels.

Over 550 vessels are using Cybermaster™ worldwide and is supported by a strong technical team of engineers for development and client support.

## Salient Features

- ▶ User-friendly graphical user interfaces and familiar menu layout.
- ▶ Accurate calculations using actual Hydrostatics & KN Curves at various heel angle.
- ▶ Online sounding mode compatible with various major instruments.
- ▶ Various report presentation showing Intact Stability & Strength reports, and also report to view database like Hydrostatics & KN, Sounding tables, SF/BM Allowables etc.
- ▶ Graphical presentations of Tank Plan.
- ▶ Inbuilt contextual User-friendly Help Manual & Tips for better & efficient learning and Online Help & support.
- ▶ Capability to view multiple loading conditions at same time.
- ▶ Type approved by various classification societies like- LRS, DNV-GL and has Specific approvals from NKK, BV, ABS, RINA & others.

## Main Functions

### PREPARATION OF LOADING CONDITIONS:

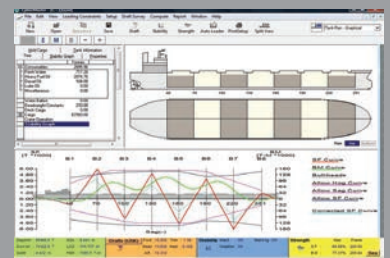
- ▶ Can create & store new Loading conditions.
- ▶ Retrieve and Edit stored Loading conditions.
- ▶ Tank / Hold filling by Weight, Volume, Percentage and Sounding / Ullage depth.
- ▶ Provision for correction in sounding due to Trim and Heel
- ▶ User defined parameters for:
  - » VCG Maximum or VCG from sounding table.
  - » FSM Maximum or From sounding tables or user defined.
- ▶ Units choice – British units/SI units, API units.

### COMPUTATION OF DRAFTS & INTACT STABILITY:

- ▶ Draft, Trim, Heel, GoMt, FSM & KG computations.
- ▶ Displacement & Dead weight calculations.
- ▶ IMO Intact Stability as per IMO A-749 and compliance comparison.
- ▶ Wind Heeling Moment calculations as per IMO A-562.
- ▶ Rolling Period calculations as per IMO A-749.

### COMPUTATIONS OF LONGITUDINAL STRENGTH:

- ▶ SF/BM calculation at the prescribed frame.
- ▶ Comparison with the allowable values.
- ▶ Shear Force correction at bulkheads.
- ▶ Graphical display of the calculation results.

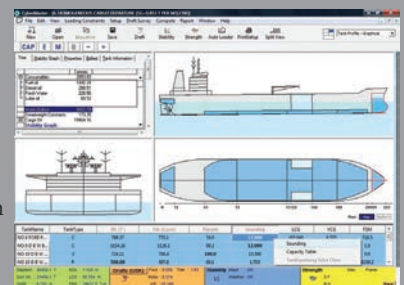


### WARNINGS, CHECKS & ERROR PREVENTION FOR EXCEEDING THE FOLLOWINGS:

- ▶ Load line Draft and Excessive Trim.
- ▶ Maximum permissible VCG exceeding.
- ▶ Any of the Stability criteria violation.
- ▶ Propeller Immersion and Minimum Forward Draft.
- ▶ Permissible Still water Bending moment and Shear force.
- ▶ Net Tank Top strength.
- ▶ Audio alarms for criteria violations.
- ▶ User-defined constraints of Draft, Trim checks.
- ▶ Special Constraints such as Minimum Ballast Draft, Propeller Immersion.

### SPECIAL AND OPTIONAL FEATURES:

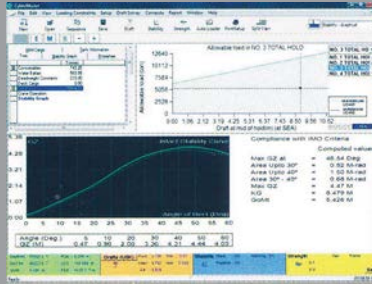
- ▶ Ballast Exchange.
- ▶ Loading/ Discharging Sequencer.
- ▶ Autoloader.
- ▶ URS 17 module (for checking flooded strength and Block Loading Curves)
- ▶ Draft Survey to find unknown Weights and to adjust Deadweights.
- ▶ Ability to check for multiple (various) Loadline.
- ▶ Network version of the software.



## Vessel Specific Versions

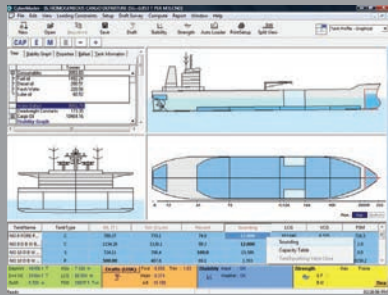
### 1. BULK CARRIERS:

- ▶ Adjacent / Block loading / permissible tank to strength warning.
- ▶ SF correction at bulkheads.
- ▶ Permissible tank top / Net tank top strength warning loading.
- ▶ Grain Stability calculations according to grain code.
- ▶ Flooded Strength Calculation.
- ▶ All URS requirements for a new bulk carrier.



### 2. OIL / CHEMICAL TANKERS:

- ▶ Use of ASTM Petro measure tables i.e. table 54A/54B/6A/6B.
- ▶ User defined VCF for chemicals.
- ▶ Cargo Compatibility warnings.
- ▶ Input as density as well as API.
- ▶ ISO Wedge correction computation.
- ▶ Provision of standard and customized format for Ullage report generation for tankers and chemical cargo carrier.
- ▶ Capability to make Heel and Trim correction to Ullage entry.
- ▶ Online interface to Ullage and temperature inputs.



### 3. GAS CARRIERS:

- ▶ Gas cargo summary and Gas cargo report.
- ▶ Cargo Quantity Calculations and various corrections to cargo volume.
- ▶ Vast Database of properties for various gases.

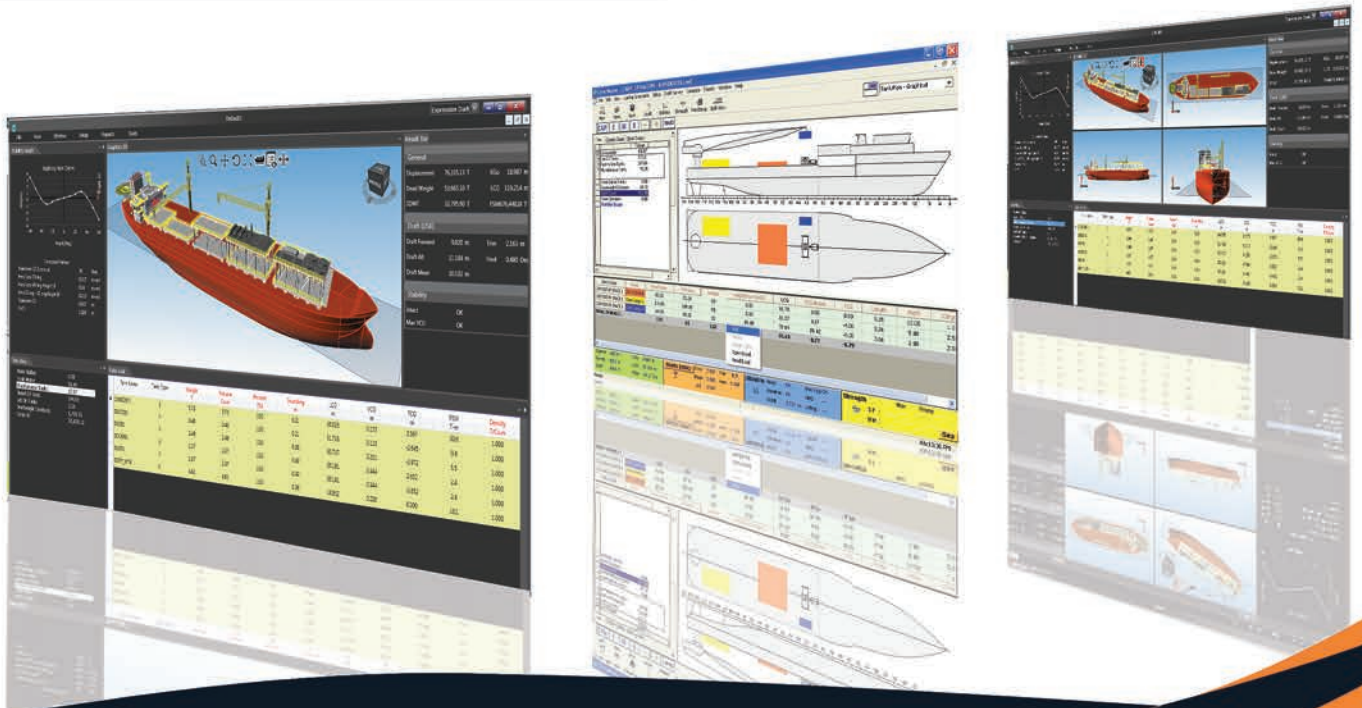
### 4. CONTAINER VESSELS:

- ▶ Cargo handling functions for Loading Port / Discharging Port, Shifting of container Control, Segregation Check, Container Sorting, Container Status.
- ▶ Graphical View for stowage Plan, Bay section, Plan/profile.
- ▶ Deck Strength and Stack Weight warning for containers.
- ▶ Preparation of bay plans with user defined parameter.
- ▶ Assigning Container properties.
- ▶ Read / Write from Baplie file and container details from excel file.
- ▶ Torsion Calculations.
- ▶ Container loading as per latest IMDG Code.



### 5. ANCHOR HANDLING SUPPLY VESSEL:

- ▶ FI Fi Criteria
- ▶ Tow Rope Criteria
- ▶ Drag and Drop of deck cargo.
- ▶ Multi Deck load display options.
- ▶ Deck Cargo identification by mouse pointing.
- ▶ Visual alarm for loading constraint violation
- ▶ Deck Cargo location interference check.



## Jack-Up RIGS & Semi Submersible:

### 6. MODEWISE FEATURES OF CYBERMASTER™ FOR RIGS:

#### Jack up Mode:

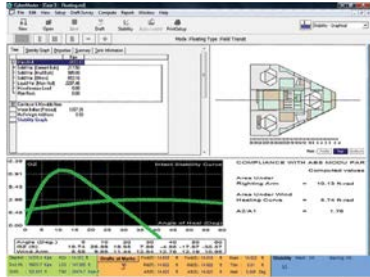
- ▶ Load Calculation for Operational Mode & Survival Mode - Leg Load, Chord Load & Spudcan Uplift Load due to wave / current for various water depths.
- ▶ Warning when the parameters exceeds.
- ▶ Load variations due to Cantilever positions.

#### Pre load Mode:

- ▶ Preload assessment, schedule and plan.
- ▶ Load Calculations.

#### Floating Mode:

- ▶ Calculation of loads and moments due to various solids and liquid bulks.
- ▶ Calculation / interpolation of Hydrostatic curves, righting moments, Healing Moments, Allowable KG, Metacentric Heights etc. Floatation stability with variable position of leg available with / without Spudcans empty.



### 7. SEMI SUBMERSIBLE:

- ▶ Anchor Chain Tension and Payout Correction.
- ▶ Choice of Azimuth directions for stability calculations.
- ▶ Graphical and Interactive Deck Loading interface with Grid.
- ▶ Allowable Residual Deck Load check against Permissible deck load.



## Additional Modules

Cybermaster™ has an additional module catering to the damage stability calculations of all types of vessel.

### DAMAGE STABILITY:



- ▶ A graphical view of Equilibrium Damaged Condition of vessel.
- ▶ Each compartment is modeled accurately using Lines Plan / Structural drawings to generated Hydrostatics & KN curves and use the same for computations at various trims.
- ▶ Damage Stability Report showing status of the vessel before & after damage.
- ▶ Flexibility to choose various combinations of compartments, along with pre-loaded Damage cases..
- ▶ All the required significant criteria like – MARPOL, IGC, SOLAS, IBC incorporated.
- ▶ Flexibility to change the default PERMEABILITY of the compartments.
- ▶ Outflow calculation with Grounding.

### DOCUMENTS REQUIRED FOR CUSTOMIZATION OF CYBERMASTER™:

- ▶ Approved Intact Stability Booklet.
- ▶ Approved Loading Manual (reqd. for Strength Approval).
- ▶ General Arrangement, Capacity Plan & Table and Docking Plan.
- ▶ Lines Plan / Offset table, Structural Drawings.
- ▶ Hydrostatics & KN Curves.
- ▶ Soundings / Ullage tables with heel & trim corrections.
- ▶ Lightship Distribution & Sectional Area / Bonjean Curves and SF/BM Allowables.
- ▶ Damage Stability Booklet.

Developed By -